



CREAM SERIES

Straightening Manual



PRECAUTIONS

- 1 Never use cream solution and neutralizer combined with any other chemical
- 2 Read the directions carefully before attempting the procedure
- 3 Following the directions to avoid over processing, hair breakage and/or skin irritation
- 4 Do not use this product if your client has had an allergic reaction to thermal straighteners, perm solutions and color hair dyes. Perform a patch test if you are unsure.
- 5 If the hair condition is questionable, do a strand test
- 6 Maintain iron temperature at 210-356°F

STEP 1 HAIR ANALYSIS

- Check the hair type, **hair chemical history, dryness and damage degree**
(The processing time will become shorter with repeated and/or compound chemical procedures)

| Healthy to Less Damaged Hair | Damaged Hair | Highly Damaged Hair |
|---|---|---|
| <ul style="list-style-type: none"> • Virgin • Semi-Permanent Color • Color with 10 vol. peroxide • Permed • Thermal damage (blow dryer, flat iron etc) | <ul style="list-style-type: none"> • Colored with 20 vol. peroxide • Tight perm • Split and dry ends | <ul style="list-style-type: none"> • Colored with 30, 40 vol. peroxide • Home colored • Bleached • Thermal reconditioning • Repeatedly color processed with 20 vol. peroxide |
| Cream ST (H) 5-30 Min | | Cream ST (S) 5-30 Min |

>> Refer to the Hair Analysis Chart on the back

STEP 2 SHAMPOOING

- Wash the hair thoroughly, making sure the scalp is clean, follow up with a treatment

STEP 3 PRE-TREATMENT

- Spray a generous amount of **G Hair Water** on entire hair
- Spray **G-PPT** on entire hair, especially on damaged areas
- Apply **G Cream Controller** after G-PPT on highly damaged areas



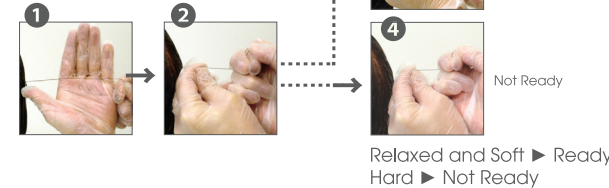
STEP 4 APPLYING THE SOLUTION

- Apply the solution
- Apply 1 inch away from the scalp in 1 inch subsections
- Cover the hair with plastic wrap after applying the solution
- Process from 5-30 min depending on the hair condition



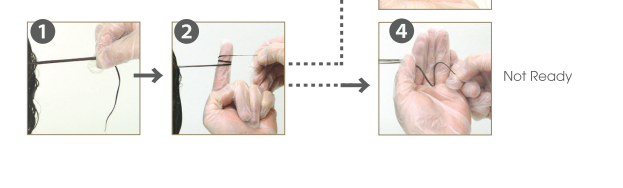
Elasticity Check (Example 1)

1. Pick 3-4 strands of processed hair
2. Hold the processed hair and gently stretch
3. If the hair stretches 0.5 inches from the original condition, then the hair is ready for wash



Elasticity Check (Example 2)

1. Pick about 1/4 inch section of hair and wipe off the solution
2. Wrap the hair around your finger twice and remove your finger. Check to see the looped shape



STEP 5 INTERMEDIATE RINSE

- Rinse out the solution thoroughly using shampoo and follow up with a treatment

STEP 6 IRONING

- Spray **G Hair Water** on the entire hair
- Spray **G-Heat Guard** on the entire hair
- Blow dry the hair until it's 80-90% dry
- Iron in 1/3 - 1/2 inch subsections
- Maintain iron temperature between 210-356°F



STEP 7 APPLYING THE NEUTRALIZER

- Apply the neutralizer
- Apply 1 inch away from scalp in 1 inch subsections
- **Process for 5 minutes**



STEP 8 RINSING OFF THE NEUTRALIZER

- Completely rinse off the neutralizer and apply treatment only. Shampoo is not necessary

STEP 9 BLOW DRYING

- Spray **G Hair Water** on the entire hair
- Spray **G-Heat Guard** on the entire hair
- Blow dry 100%



STEP 10 FINISHING IRON PRESS

- Style
- Apply Frizz Control Serum



Caring for newly straightened hair at home

- Wait 48 hours before shampooing
- Select home hair care products appropriate to client's hair type
- Blow dry 100% after shampooing everytime to maintain straightness
- Wait 2 weeks for coloring







CAUTION LIST

TO AVOID HAIR BREAKAGE AND UNEXPECTED RESULTS, REVIEW THE FOLLOWING CHART.

| STEP | CHECK POINT | REASON | |
|------|-----------------------------|--|--|
| 1 | Hair Analysis | <ul style="list-style-type: none"> Identify the hair damage level from previous chemical treatment such as color, perm and relaxer Explain expected result to client | <ul style="list-style-type: none"> To avoid misidentifying damage level To avoid misunderstanding |
| | | <ul style="list-style-type: none"> Wash the hair gently Use lukewarm water with gentle pressure | <ul style="list-style-type: none"> To avoid damaging the hair and scalp by scrubbing To avoid damaging the hair |
| 3 | Pre-Treatment | <ul style="list-style-type: none"> Do not apply G-Cream Controller on resistant areas | <ul style="list-style-type: none"> Hinders process |
| | | <ul style="list-style-type: none"> Never apply on the scalp, leave 1 inch away from the scalp Apply evenly as quickly as possible | <ul style="list-style-type: none"> To avoid bending the hair at the roots, which leads to hair breakage To avoid difference of processing time |
| 4 | Applying the solution | <ul style="list-style-type: none"> Do not press down plastic wrap on hair, just gently place it Do not apply heat Make sure to saturate hair with solution Do not comb right after application | <ul style="list-style-type: none"> To prevent the solution from making contact with the root of the hair To avoid over-processing and uneven processing To straighten every single strand of hair To avoid breakage and damage |
| | | <ul style="list-style-type: none"> Rinse nape area first | <ul style="list-style-type: none"> To avoid hair breakage |
| | | <ul style="list-style-type: none"> Do not scrub hair when towel drying Do not comb forcibly | <ul style="list-style-type: none"> To avoid damaging the hair To avoid damaging the hair |
| | | <ul style="list-style-type: none"> Do not over dry before ironing Do not leave too much moisture before ironing | <ul style="list-style-type: none"> To avoid making it harder to straighten the hair To avoid hair sizzling which leads to hair damage |
| 7 | Applying the neutralizer | <ul style="list-style-type: none"> Never apply onto the scalp, leave 1 inch away from the scalp | <ul style="list-style-type: none"> To avoid bending the hair at the roots, which leads to hair breakage |
| | | <ul style="list-style-type: none"> Rinse off the neutralizer completely Use lukewarm water with gentle pressure | <ul style="list-style-type: none"> To avoid damaging the hair To avoid damaging the hair |
| 8 | Rinsing off the neutralizer | <ul style="list-style-type: none"> Dry hair gently in direction of cuticles | <ul style="list-style-type: none"> To have smoother and shinier results |
| | | <ul style="list-style-type: none"> Use lukewarm water with gentle pressure | <ul style="list-style-type: none"> To avoid damaging the hair |
| 9 | Blow Drying | <ul style="list-style-type: none"> Dry the hair completely before ironing | <ul style="list-style-type: none"> To avoid damaging the hair |
| | | <ul style="list-style-type: none"> Advise the client not to shampoo within 48 hours | <ul style="list-style-type: none"> To maintain straight hair |
| 10 | Finishing Iron Press | <ul style="list-style-type: none"> Advise the client to use YUKO home hair care products | <ul style="list-style-type: none"> To maintain the hair condition |
| | | <ul style="list-style-type: none"> Home Hair Care Advice | <ul style="list-style-type: none"> To maintain the hair condition |

Y YUKO info@yuko-usa.com | Tel (877)985-6797 | www.yuko-usa.com

HAIR ANALYSIS CHART

| STEP | HEALTHY TO LESS DAMAGED HAIR | DAMAGED HAIR | HIGHLY DAMAGED HAIR |
|------|---|---|--|
| 1 | Example <ul style="list-style-type: none"> Virgin Semi-Permanent Color Colored with 10 vol. peroxide Permmed Thermal Damage (Blow Dryer, flat iron) | Example <ul style="list-style-type: none"> Colored with 20 vol. peroxide Tight Permmed Split and dry ends | Example <ul style="list-style-type: none"> Colored with 30, 40 vol. peroxide Home Colored Bleached Thermal Reconditioning Repeatedly color processed with 20 vol. peroxide |
| 2 | Wash the hair thoroughly, making sure the scalp is clean, follow up with a treatment | Wash the hair thoroughly, making sure the scalp is clean, follow up with a treatment. For damaged hair, recommend using a repair masque | Wash the hair thoroughly, making sure the scalp is clean, follow up with a treatment. For damaged hair, recommend using a repair masque |
| 3 | <ul style="list-style-type: none"> G-Hair Water G-PPT G-Cream Controller | <ul style="list-style-type: none"> G-Hair Water G-PPT G-Cream Controller | <ul style="list-style-type: none"> G-Hair Water G-PPT G-Cream Controller |
| 4 | Applying the solution  5-30 Min |  5-30 Min | Applying the solution  5-30 Min |
| 5 | Intermediate Rinse Rinse out the solution thoroughly using shampoo and follow up with a treatment | Rinse out the solution thoroughly using shampoo and follow up with a treatment | Rinse out the solution thoroughly using shampoo and follow up with a treatment |
| 6 | Ironing <ul style="list-style-type: none"> G-Hair Water G-Heat Guard | <ul style="list-style-type: none"> G-Hair Water G-Heat Guard | <ul style="list-style-type: none"> G-Hair Water G-Heat Guard |
| 7 | Applying the neutralizer G-Cream Straight Neutralizer 5 min  |  | Applying the neutralizer G-Cream Straight Neutralizer 5 min.  |
| 8 | Rinsing off the neutralizer Completely rinse off the neutralizer and apply treatment only. Shampoo is not necessary | Completely rinse off the neutralizer and apply treatment only. Shampoo is not necessary | Completely rinse off the neutralizer and apply treatment only. Shampoo is not necessary. Repair masque is recommended. |
| 9 | Blow Drying <ul style="list-style-type: none"> G-Hair Water G-Heat Guard | <ul style="list-style-type: none"> G-Hair Water G-Heat Guard | <ul style="list-style-type: none"> G-Hair Water G-Heat Guard |
| 10 | Finishing the Iron Press <ul style="list-style-type: none"> Fizz Control Serum or Tsuya Pota | <ul style="list-style-type: none"> Fizz Control Serum or Tsuya Pota | <ul style="list-style-type: none"> Fizz Control Serum or Tsuya Pota |